

ROICA Resistance™ family is an unique family of premium stretch yarns for a more durable and calibrated shape control. Choosing fabrics for garments with ROICA Contour™ family INSIDE creates confidence and security through its fit, focused compression for shaping and muscle support performance exactly where it is needed.

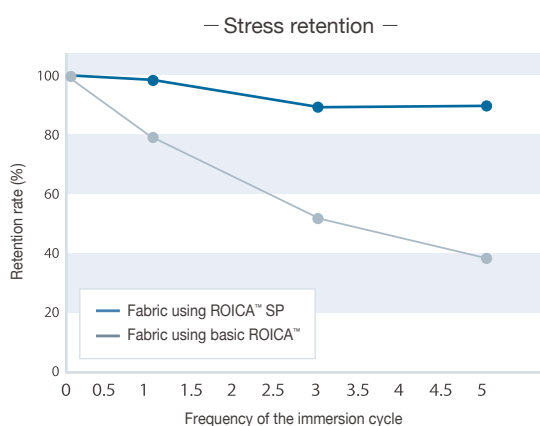
ROICA™ SP

Application | ACTIVATION / AQUA / STYLE#FIT / LEGWEAR / ESSENTIALS

- Excellence in chlorine resistance
- Resistance in bleaching process



▼ Chlorine resistance

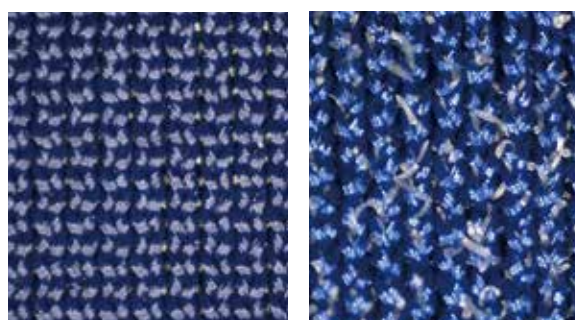


[Sample] Two-way tricot
 PET56dt/48f × ROICA™ SP 44dt(PET81%,PU19%)
 PET56dt/24f × Basic ROICA™ 44dt(PET81%,PU19%)

[Test method]
 Chlorine resistance test (chlorine embrittlement test)
 • One cycle of chlorine treatment conditions: Fabric was immersed for six hours at a chlorine concentration of 300ppm and water temperature of 35°C.
 • Stress retention rate at 80% extension and recovery
 * Measurement performed at the Consumer Product End-use Research Institute Co., Ltd.

▼ Restrains embrittlement

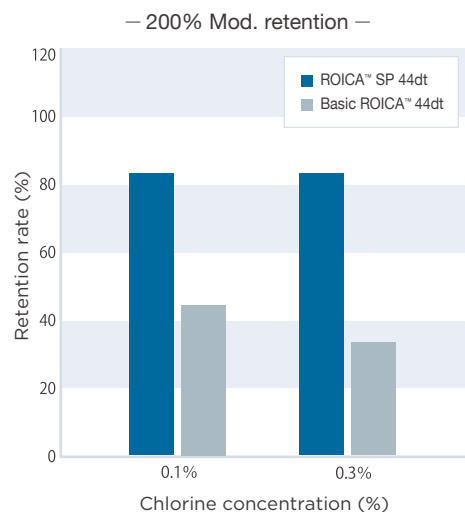
Comparison of fabric surfaces after immersion in chlorine



Yarn breakages are observed in fabric using basic ROICA™.

[Test method]
 The test conditions is the same as written on the left side of this page. After the pretreatment, both fabrics were stretched a few times.

▼ Comparison of the power retention on the assumption of processes for bleached denim



The product for comparison may easily undergo strength deterioration.

[Sample]
 ROICA™ SP 44dt
 Basic ROICA™ 44dt