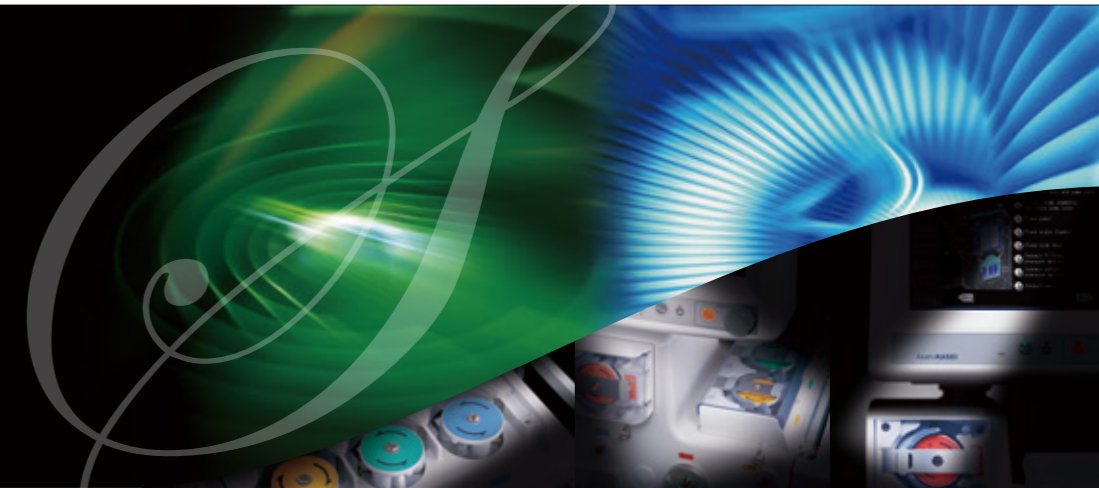


Blood Purification Equipment

Plasauto Σ TM

Blood Purification Equipment

Plasauto Σ TM



Global distributor:

ASAHI KASEI MEDICAL CO., LTD.

1-1-2 Yurakucho, Chiyoda-ku, Tokyo 100-0006 Japan
TEL: +81-3-6699-3771 FAX: +81-3-6699-3773
www.asahikasei-medical.com

Authorized Representative in the European Community:

ASAHI KASEI MEDICAL EUROPE GmbH

Herriotstrasse 1, 60528 Frankfurt am Main Germany
TEL: +49 (0) 69 66 37 15 00 FAX: +49 (0) 69 6 66 51 93

Manufacturer:

MED-TECH INC.

1-103-66, Yoshinodai, Kawagoe-shi, Saitama 350-0833 Japan

PlasautoΣ is a multifunctional system for all treatment modes in therapeutic apheresis and CRRT. The system features a variety of automatic control functions, including automated plasma recovery and pressure-driven automatic flow control.

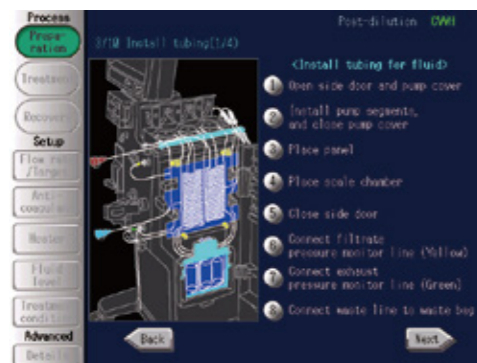
Multifunctional System

PlasautoΣ is a multifunctional system for all treatment modes in therapeutic apheresis and CRRT.

Therapeutic Apheresis	PE	DFPP	PA	LCAP	HA
	<input type="radio"/>	<input type="radio"/>	<input type="radio"/>	<input type="radio"/>	<input type="radio"/>
CRRT	CVVH	CVVHD	CVVHDF	SCUF	
	<input type="radio"/>	<input type="radio"/>	<input type="radio"/>	<input type="radio"/>	

Guidance functions

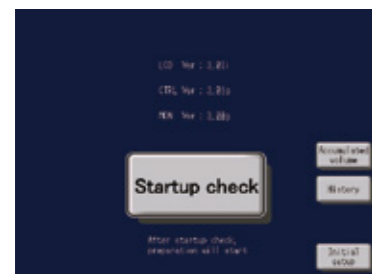
The LED touch screen provides visual guidance for various procedures from tubing set up to blood recovery. When an error occurs, the system displays the location of the error and actions to take in response to alarms.



Tubing set guidance



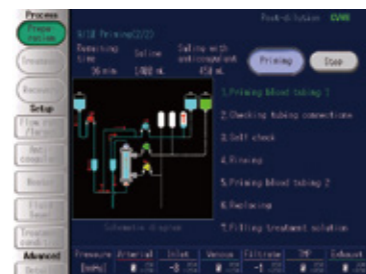
Response-to-alarm guidance



Self check screen

Startup check

The machine automatically performs a self-check in just one minute to assure system integrity including pump rotation, valve status and scale offset.



Priming screen

Auto-priming

The auto-priming function is applicable to even wet columns. The auto-priming function provides a self-check of the tubing connection, scale and pressure monitor. This helps ensure proper operation with high safety.



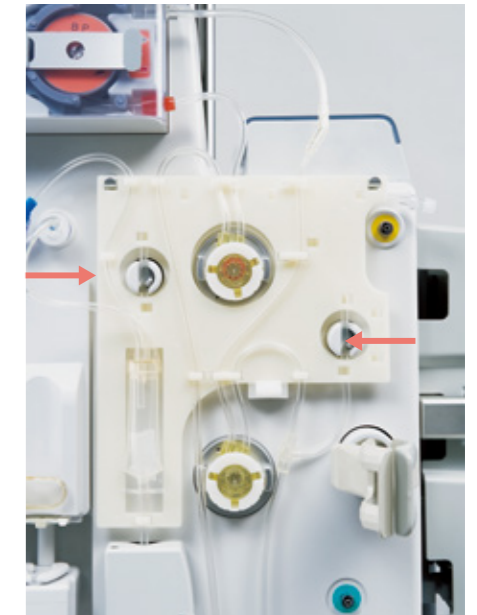
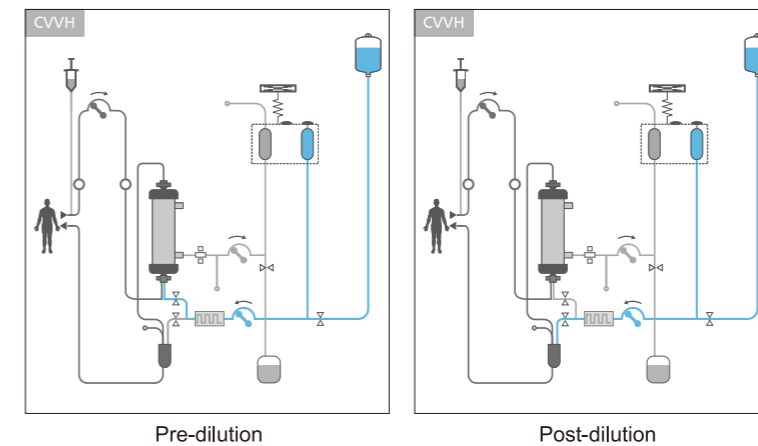
Plasma recovery screen

Automatic plasma recovery

With the single touch of a button, the machine completes plasma recovery in the DFPP and PA modes that use two filters.

Selection of pre- or post-dilution mode

The use of two pinch valves allows the user to switch between pre- and post-dilution during CVVH and CVVHDF treatment modes with the single touch of a button.



Automatic flow rate control

- Each treatment mode provides the automatic flow rate control function to assure safe use of our filter products.
- DFPP, PA and PE modes: According to the 1st filter TMP, the plasma separation flow rate is automatically reduced to prevent hemolysis.
- LCAP mode: The blood pump speed is automatically reduced according to the pressure difference.

Auto-restart from blood shortage alarm

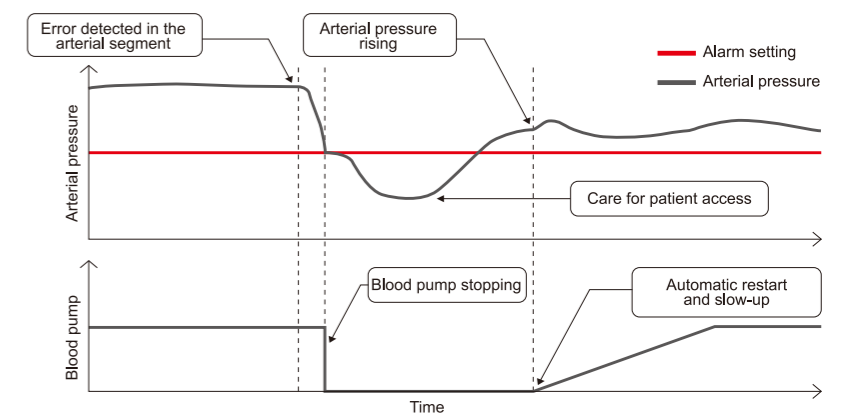
The blood pump automatically restarts when normal arterial pressure is restored. The blood pump can be set to slow-up operation after the blood shortage is restored.

High volume treatment

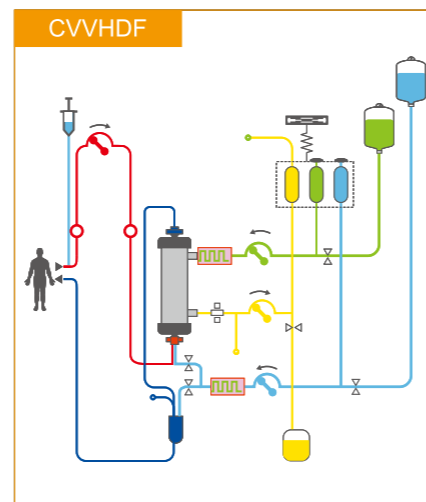
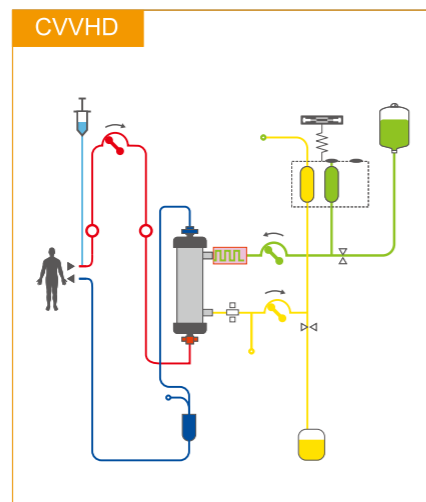
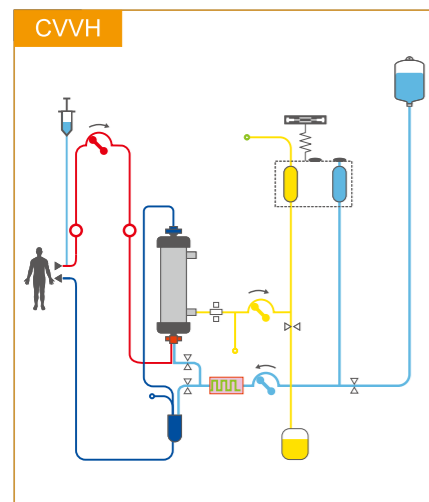
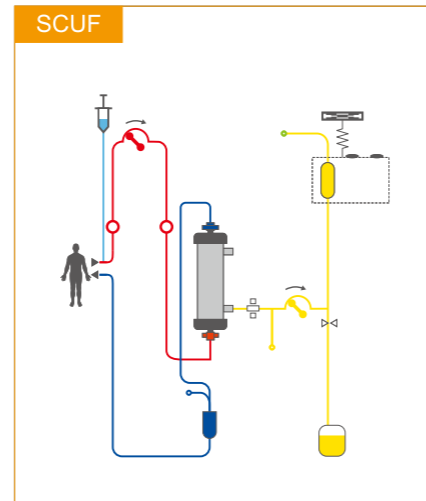
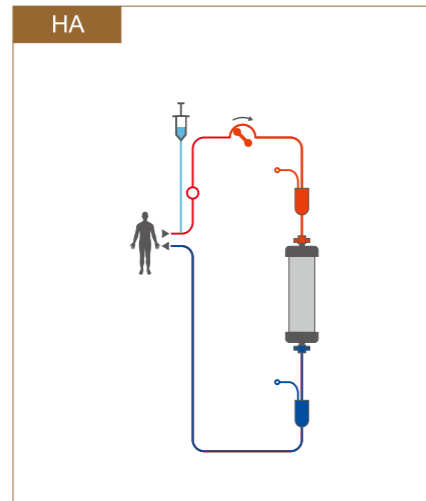
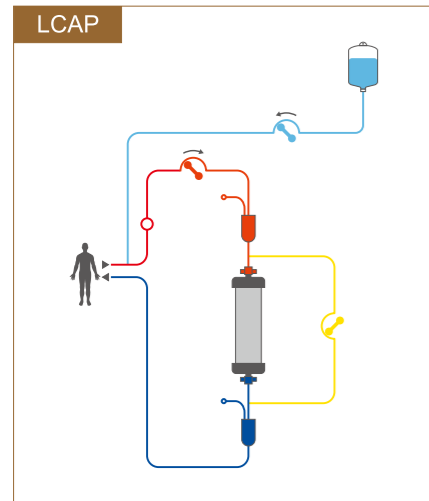
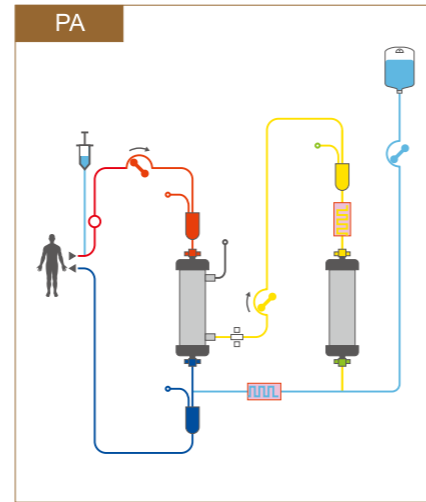
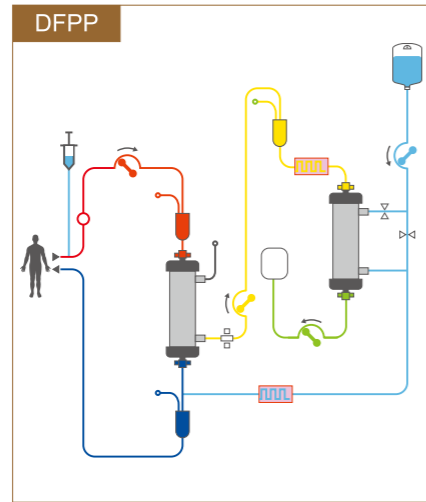
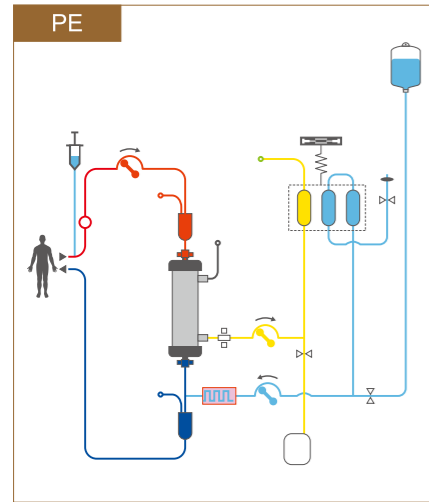
The replacement pump and dialysate pump provides the set range up to 10.00L/h, which meets the needs of high volume treatment.

Data management

Data stored in the machine can be retrieved using a USB memory stick.



Available treatment modes



Specification

Treatment mode	CRRT	CVVH, CVVHD, CVVHDF, SCUF	
Blood pump	Apheresis	PE, PA, DFPP, LCAP, HA	
	Type	3-roller tubing pump	
	Tube setting	Movable stator (interlocked with cover)	
	Flow rate control range	1 to 400 mL/min (CRRT)	
Pump (FP)	Flow rate control range	1 to 200 mL/min (Apheresis)	
	Type	3-roller tubing pump	
	Tube setting	Movable stator (interlocked with cover)	
Pump (DP)	Flow rate control range	0.01 to 12.00 L/h	
	Type	3-roller tubing pump	
Pump (RP)	Flow rate control range	0.01 to 10.00 L/h	
	Type	3-roller tubing pump	
Syringe pump	Tube setting	Movable stator (interlocked with cover)	
	Flow rate control range	0.01 to 10.00 L/h	
	Flow rate control range	0.01 to 10.00 L/h	
Syringe pump	Applicable syringe	20, 30 and 50mL syringes	
	Flow rate control range	0.1 to 15.0 mL/h	
	Fast feed flow rate	0.1 mL/s or more	
Air detector 1	Type	Ultrasonic transmission	
	Sensitivity	0.1 mL or more (blood pump flow rate: 100mL/min)	
Air detector 2	Type	Ultrasonic transmission	
	Sensitivity	0.01 mL or more (blood pump flow rate: 100mL/min)	
Blood detector	Type	Optical (infrared)	
Empty detector 1	Type	Ultrasonic transmission	
Empty detector 2	Type	Ultrasonic transmission	
Blood leak detector	Type	Optical (infrared, light)	
Pressure sensors	Arterial pressure	Measurement range	-500 to 500 mmHg
	Inlet pressure	Measurement range	-500 to 500 mmHg
	Venous pressure	Measurement range	-500 to 500 mmHg
	Filtrate pressure	Measurement range	-500 to 500 mmHg
	2nd filter pressure	Measurement range	-500 to 500 mmHg
Heater 1	Type	Single-sided heating plate	
	Temperature set range	35 to 40°C (plate surface)	
Heater 2	Type	Single-sided heating plate	
	Temperature set range	35 to 40°C (plate surface)	
Scale	Rating	3 kg	
Battery	Operating time	Can operate blood pump for about 15 min	
	Rated voltage	AC 100 to 240 V	
Electrical ratings	Rated frequency	50/60 Hz	
	Power unit	400 VA	
	Signal I/O P1	Remote alarm port	
Signal I/O P2	Ethernet port		
Electric shock protection	Class I equipment, Type BF applied part		
Waterproofing	IPX1		
EMC	Conform to EMC standard EN60601 -1 -2:2015 +A1:2021		
Dimensions	496(W) X 1465(H) X 547(D) mm		
Weight	Approx.70 kg		

